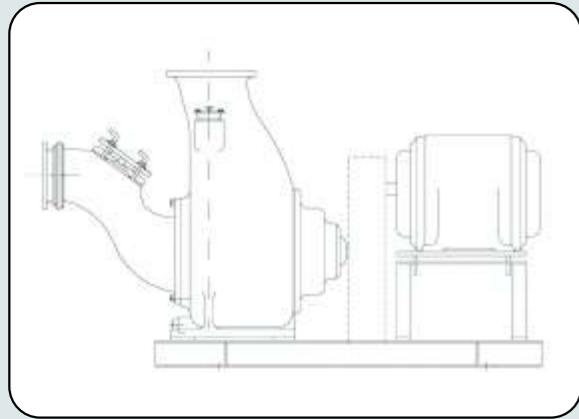


ALLPRIME

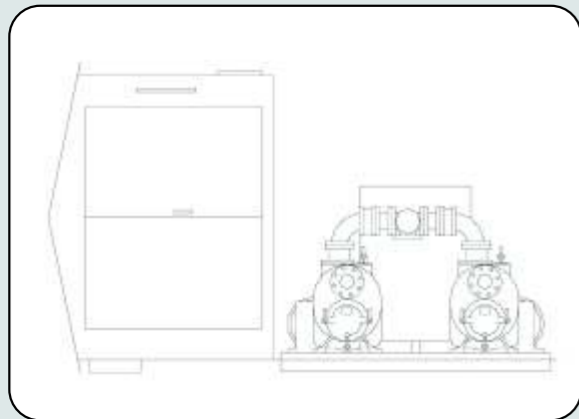
PUMPS



Base mounted direct coupled, vertical or horizontal V-belt



Trailer mounted, diesel or gasoline driven



Duplex lift stations packaged complete with controls and piping in easy access fiberglass enclosures



Distributed by:



www.allprimepumps.com



SERIES S-LINE & I-LINE

ALLPRIME

The AllPrime pumps feature

An unique Identity

- Name brand associated with better quality and availability
- A product range to cover most self priming applications
- A more economical priced product
- Products manufactured under new ownership and management
- A more marketable name with an improved finished product

The Mechanical design

- Parts at lower manufacturing cost can be fitted to similar design brands
- Maximum reliability with the original proven design features
- Reduced manufacturing cost without compromising reliability
- Pump chamber capacity alone ensures repriming
- Minimum parts without added costly gimmicks

The Hydraulic design

- Ensure most economical operating costs
- Best possible efficiency and power consumption
- Minimum vibration for longer seal and bearing life
- A performance range to suit single stage operating parameters

AllPrime, a new product tailored for the existing and new pump user, with a fresh market approach based on sound research and new manufacturing techniques based on the original successful and proven design.



ALLPRIME

ONE PRODUCT
ALL SOLUTIONS

AllPrime is a product manufactured using the most advanced technology. The design permits easy and fast access to inside parts, to clean up and for easy handling. This pump is totally interchangeable with several other similar pumps. AllPrime is the result of more than two generations of skilled professionals globally specialized in the pump industry. The result of this union of generations is a product that can be used in a wide variety of pumping applications.



MAINTENANCE

EASY AND FAST

AllPrime Pump normal maintenance activities can be done quickly and easily using standard hand tools - saving time and money.

ADJUSTMENT

SHIMLESS EXTERNAL IMPELLER

An easy to use external impeller clearance adjustment system allows the impeller and wear plate to operate with optimum clearances without disassembly. Using only common hand tools, the pump can be maintained at peak efficiency to extend both impeller and wear plate life.

AUTOMATIC SELF-PRIMING

NO SUCTION CHECK VALVE REQUIRED

The AllPrime I and S series pumps are equipped with a suction check valve but do not required the check valve to be in place to re-prime. The large volume of liquid carried in the volute allows dry suction re-priming.

INSPECTION AND CLEANING

WITHOUT DISTURBING PIPING

An advantage of AllPrime Pump is that the front cleanout cover and the rotating assembly can be removed without disturbing the piping; thus, allowing inspection and cleaning in place with little effort. Both I and S series pumps have this feature.

CONSTRUCTION MATERIAL

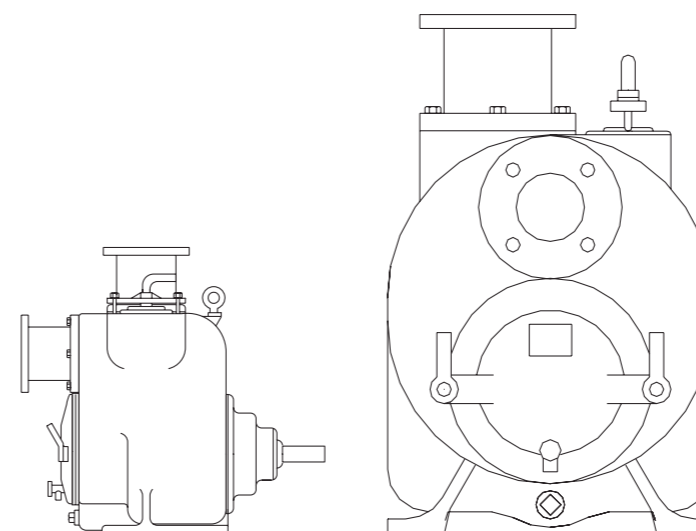
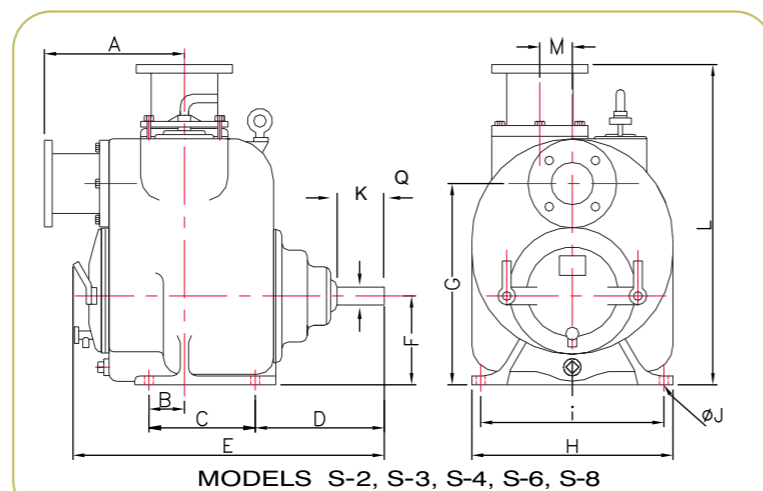
	STD	CI/316SS	CI/CD4MCU	CI/ADI	ADI	316SS	CD4MCU
CASING	A48CL30				ADI	316SS	CD4MCU
IMPELLER	A60-40-18	316SS	CD4MCU	ADI	ADI	316SS	CD4MCU
WEAR PLATE	A48CL30	316SS	CD4MCU	ADI	ADI	316SS	CD4MCU
COVER PLATE	A48CL30				ADI	316SS	CD4MCU
BEARING HOUSING	A48CL30				ADI	316SS	CD4MCU
SEAL PLATE	A48CL30	316SS	CD4MCU	ADI	ADI	316SS	CD4MCU
FLAP VALVE	NEOPRENE				VITON		
SHAFT SLEEVE	ANSI4140HT	ANSI 17-4PH					
IMPELLER SHAFT	ANSI4140HT	ANSI 17-4PH					
FLANGE	A48CL30				ADI	316SS	CD4MCU
O'RINGS	BUNA - N				VITON		
MECHANICAL SEAL	316SS, BUNA, TUNGS/TITANIUM CARBIDE				316, VITON, TUNGS/TITANIUM CARBIDE		



S-LINE

MODEL S-2

The principal characteristics of the S series are high solids capacity, different ranges between 2" - 12", diverse construction materials, solids handling capacity, operate by different speeds, easy and quick maintenance and operation.

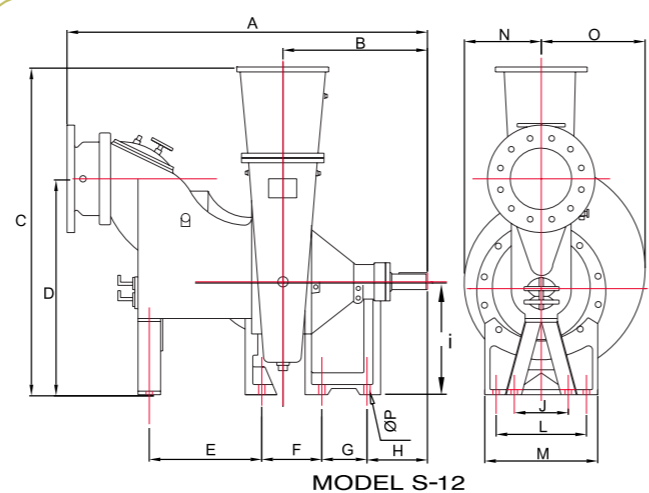
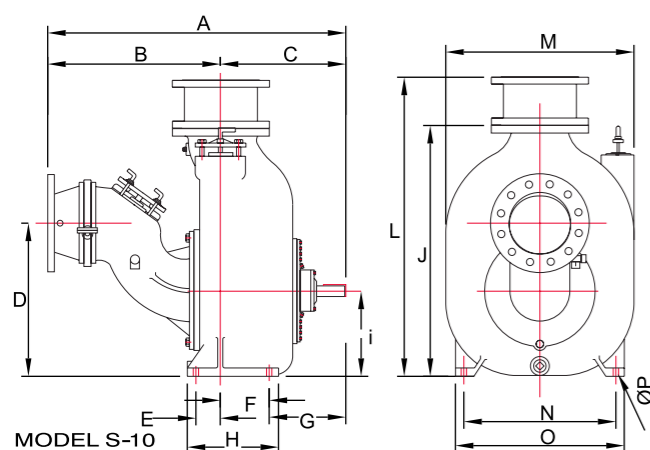


DATA SHEET

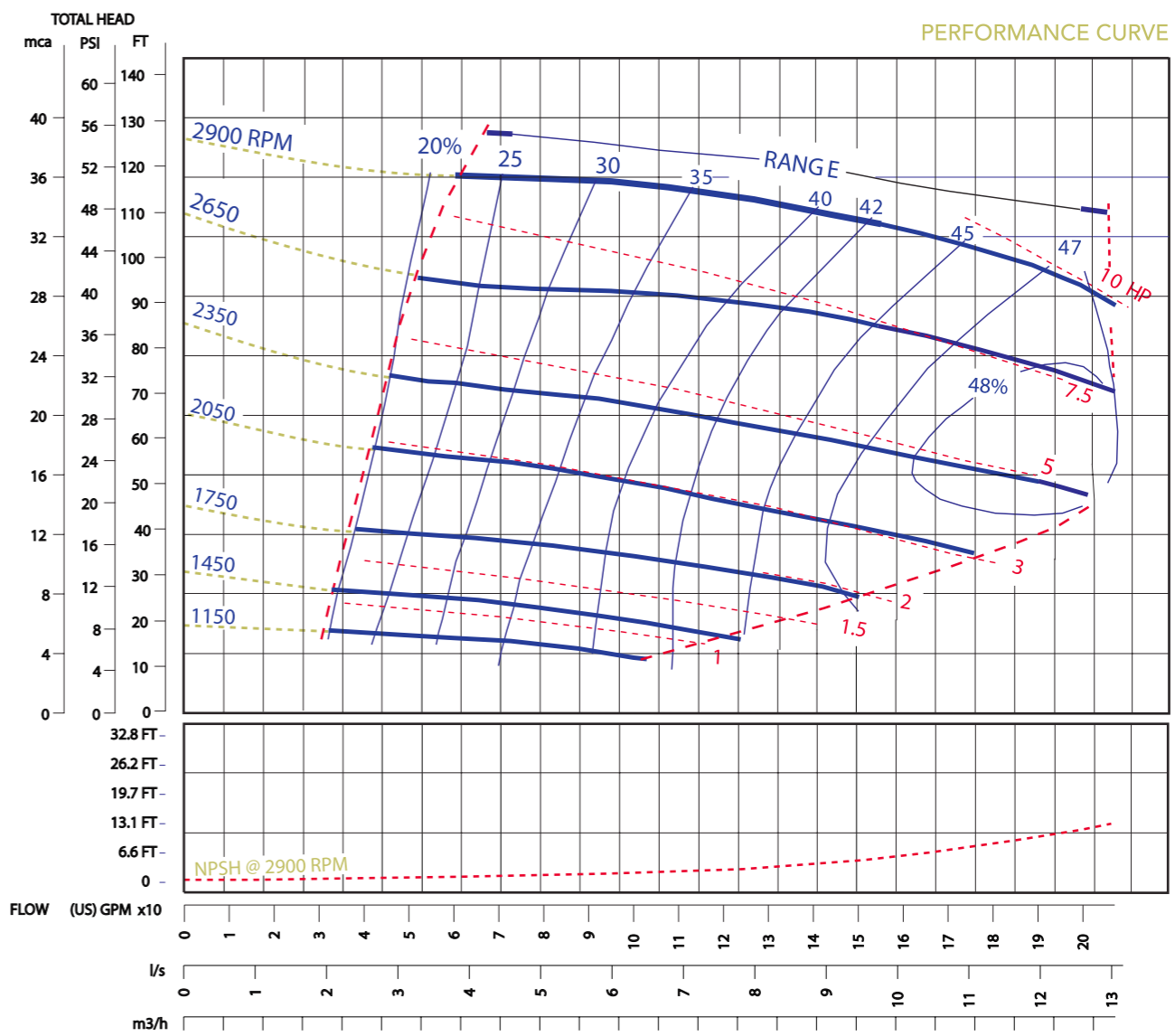
Net Weight: 92kg (203lbs)
 Shipping Weights: 114kg (252lbs)
 Impeller Diameter: 158,75 mm (6,1/4")
 RPM: from 1150rpm to 2900rpm
 Max. Solids: 44,45mm (1,3/4")

SELF-PRIMING

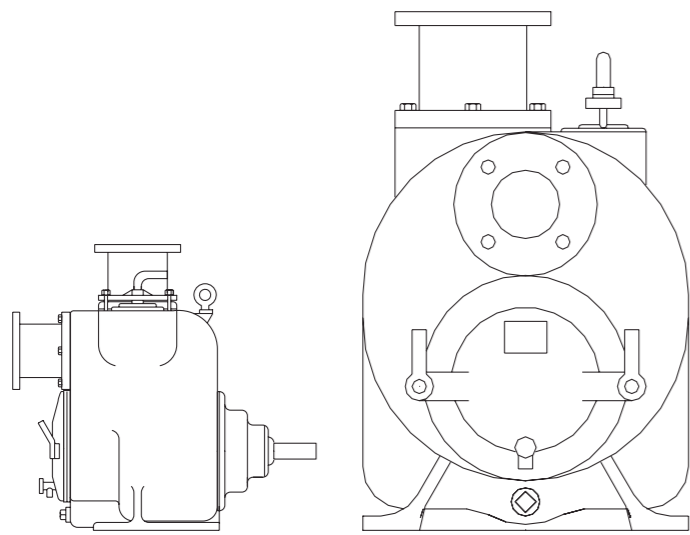
1150rpm 7,3m (24ft) - 1440rpm 7,6m (25ft)
 1750rpm 7,6m (25ft) - 2050rpm 7,6m (25ft)
 2350rpm 7,6m (25ft) - 2650rpm 7,6m (25ft)
 2650rpm 7,6m (25ft) - 2900rpm 7,6m (25ft)
 before using the table, check the NPSH



MODELS	S-2"	S-2	S-3"	S-3	S-4"	S-4	S-6"	S-6	S-8"	S-8	S-10"	S-10	S-12"	S-12
A	9,25	235,0	11,56	293,7	12,50	317,5	16,00	406,4	16,25	412,8	48,71	1237,2	63,84	1621,5
B	2,13	54,0	3,00	76,2	3,06	77,8	3,06	77,8	4,00	101,6	28,03	712,0	25,54	650,0
C	6,43	163,2	9,00	228,6	11,00	280,0	11,00	279,4	12,00	304,8	20,68	525,3	56,08	1474,7
D	10,83	275,0	11,19	284,2	11,56	293,7	11,56	293,7	16,03	407,1	25,06	636,5	38,25	971,5
E	21,54	547,0	26,31	668,3	30,25	768,4	31,56	801,7	40,28	1023,1	4,00	101,6	20,00	508,0
F	5,97	151,5	7,50	190,5	8,75	222,2	10,13	257,2	13,00	330,2	8,00	204,3	10,63	270,0
G	12,52	318,0	17,00	431,8	19,50	495,4	22,38	568,3	28,50	723,9	12,68	320,8	8,00	203,2
H	12,14	308,3	17,00	431,8	19,75	501,7	22,75	577,9	27,75	704,9	15,00	381,0	10,73	272,5
I	11,06	281,0	15,50	393,7	18,00	457,2	20,75	527,0	25,00	635,0	14,00	355,6	20,00	508,0
J	0,56	14,0	0,69	17,5	0,69	17,5	0,69	17,5	0,88	22,4	41,00	1041,4	9,56	242,8
K	1,50	38,1	1,50	38,1	1,50	38,1	1,50	38,1	1,75	44,5	1,75	44,5	2,75	69,9
L	20,59	523,0	27,06	687,4	29,25	743,0	35,31	896,9	42,06	1068,3	48,06	1220,7	16,00	406,4
M	2,75	70,0	2,75	70,0	2,75	70,0	2,75	70,0	-	-	30,94	785,9	20,00	508,0
N	-	-	-	-	-	-	-	-	-	-	25,00	635,0	13,62	345,9
O	-	-	-	-	-	-	-	-	-	-	27,75	704,9	18,38	466,9
P	-	-	-	-	-	-	-	-	-	-	0,88	22,4	1,13	28,7
Q	4,00	101,6	4,00	101,6	5,00	127,0	5,00	127,0	6,69	169,9	4,81	122,2	6,59	167,4



MODEL S-3



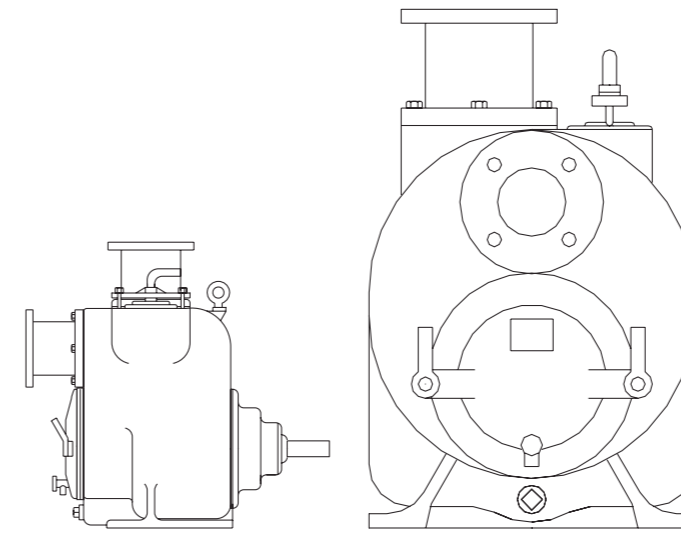
DATA SHEET

Net Weight: 273kg (404lbs)
 Shipping Weights: 298kg (452lbs)
 Impeller Diameter: 222,22 mm (8,3/4")
 RPM: from 650rpm to 2150rpm
 Max. Solids: 63,5mm (2,1/2")

SELF-PRIMING

650rpm 1,5m (5ft) - 750rpm 1,8m (6ft)
 850rpm 2,4m (8ft) - 950rpm 3,0m (10ft)
 1050rpm 4,0m (13ft) - 1150rpm 4,9m (16ft)
 1250rpm 5,5m (18ft) - 1350rpm 5,8m (19ft)
 1450rpm 6,4m (21ft) - 1550rpm 6,4m (21ft)
 1650rpm 6,7m (22ft) - 1750rpm 6,7m (22ft)
 1850rpm 7,6m (25ft) - 1950rpm 7,6m (25ft)
 2050rpm 7,6m (25ft) - 2150rpm 7,6m (25ft)

MODEL S-4

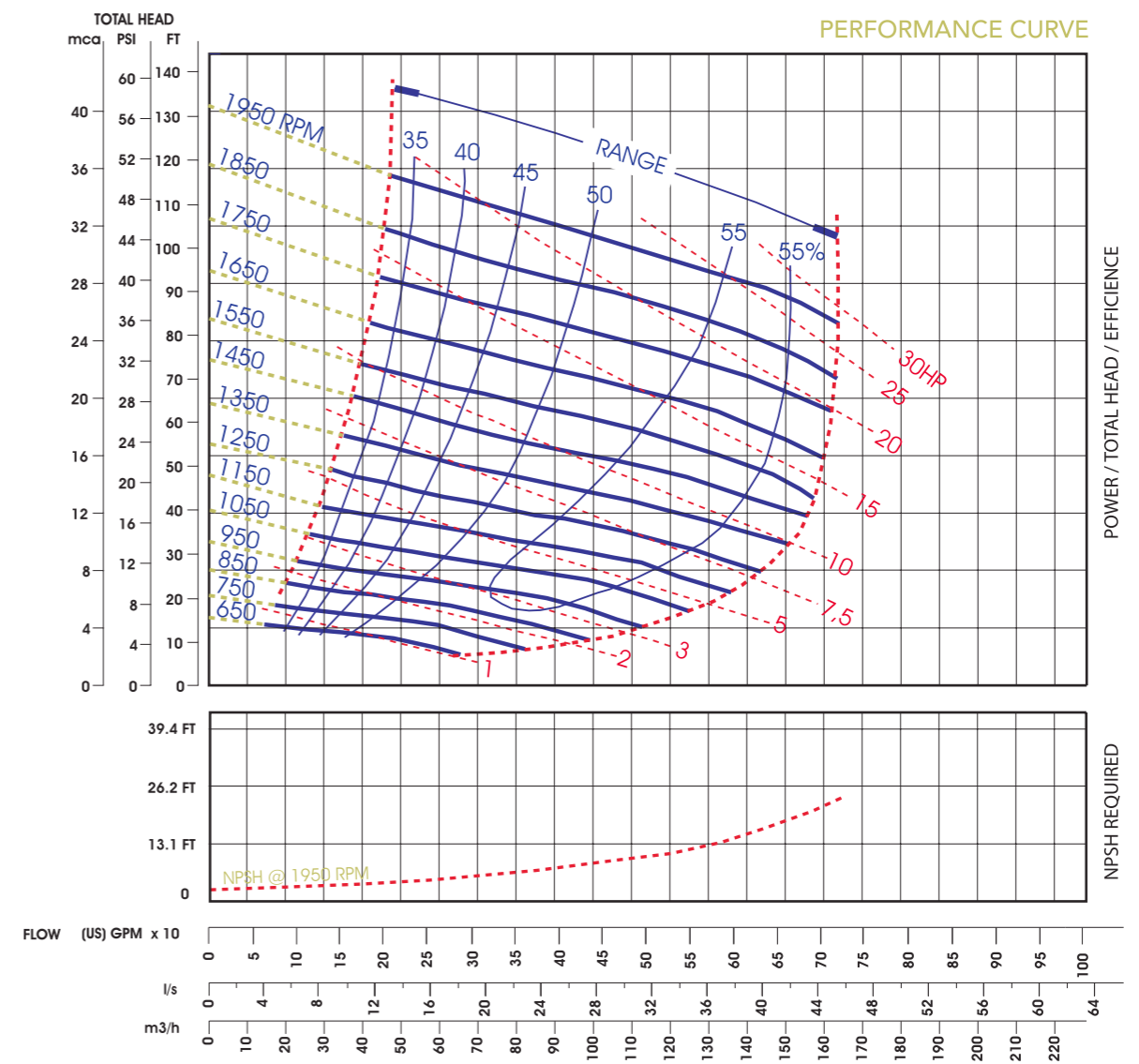
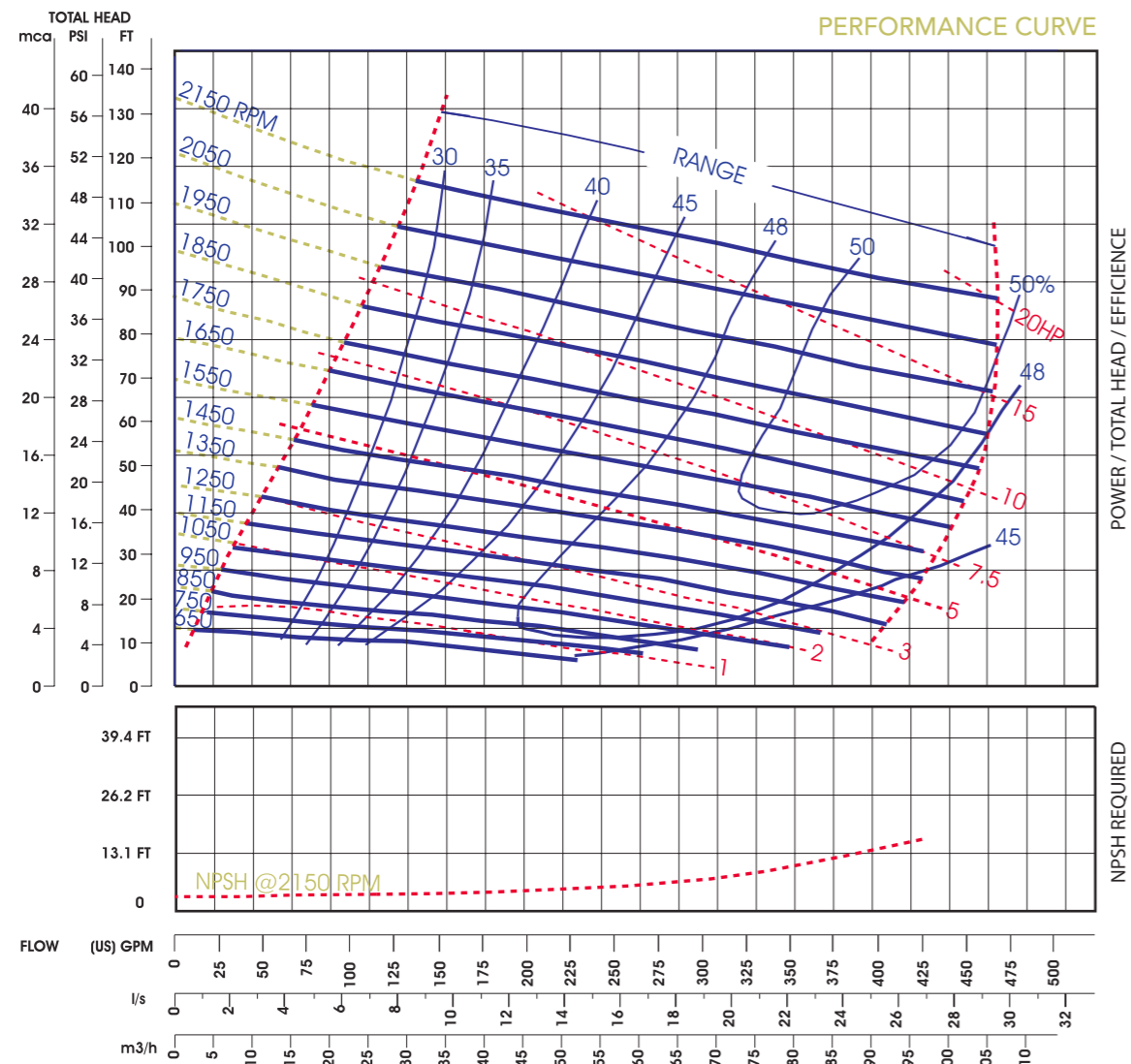


DATA SHEET

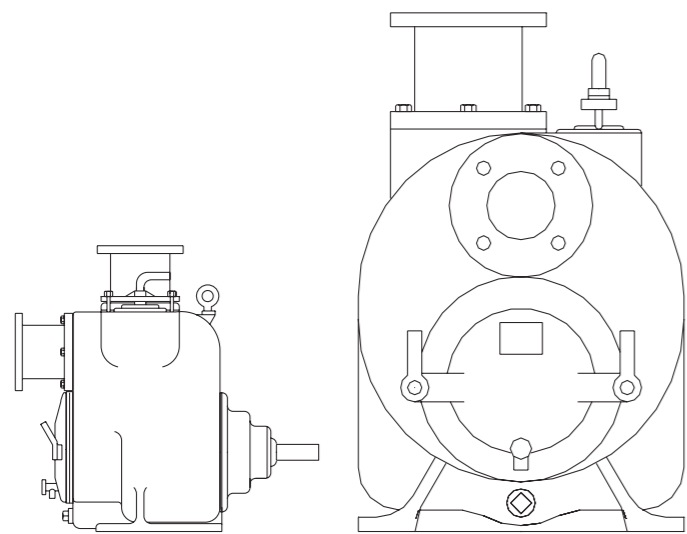
Net Weight: 259,5kg (600lbs)
 Shipping Weights: 280kg (655lbs)
 Impeller Diameter: 247,65 mm (9,3/4")
 RPM: from 650rpm to 1950rpm
 Max. Solids: 76,2mm (3")

SELF-PRIMING

650rpm 1,5m (5ft) - 750rpm 2,4m (8ft)
 850rpm 4,9m (16ft) - 950rpm 5,8m (19ft)
 1050rpm 6,7m (22ft) - 1150rpm 7,3m (24ft)
 1250rpm 7,6m (25ft) - 1350rpm 7,6m (25ft)
 1450rpm 7,6m (25ft) - 1550rpm 7,6m (25ft)
 1650rpm 7,6m (22ft) - 1750rpm 7,6m (25ft)
 1850rpm 7,6m (25ft) - 1950rpm 7,6m (25ft)



MODEL S-6



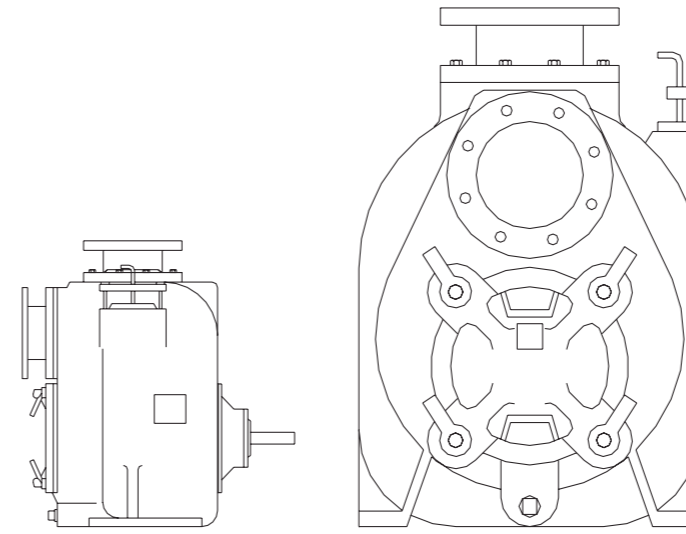
DATA SHEET

Net Weight: 364kg (802lbs)
 Shipping Weights: 391kg (862lbs)
 Impeller Diameter: 314,32 mm (12,3/8")
 RPM: from 650rpm to 1550rpm
 Max. Solids: 76,2mm (3")

SELF-PRIMING

650rpm 2,4m (8ft) - 750rpm 2,7m (9ft)
 850rpm 3,6m (12ft) - 950rpm 4,3m (14ft)
 1050rpm 5,5m (18ft) - 1150rpm 6,4m (21ft)
 1250rpm 6,4m (21ft) - 1350rpm 6,7m (22ft)
 1450rpm 7,0m (23ft) - 1550rpm 7,6m (25ft)

MODEL S-8

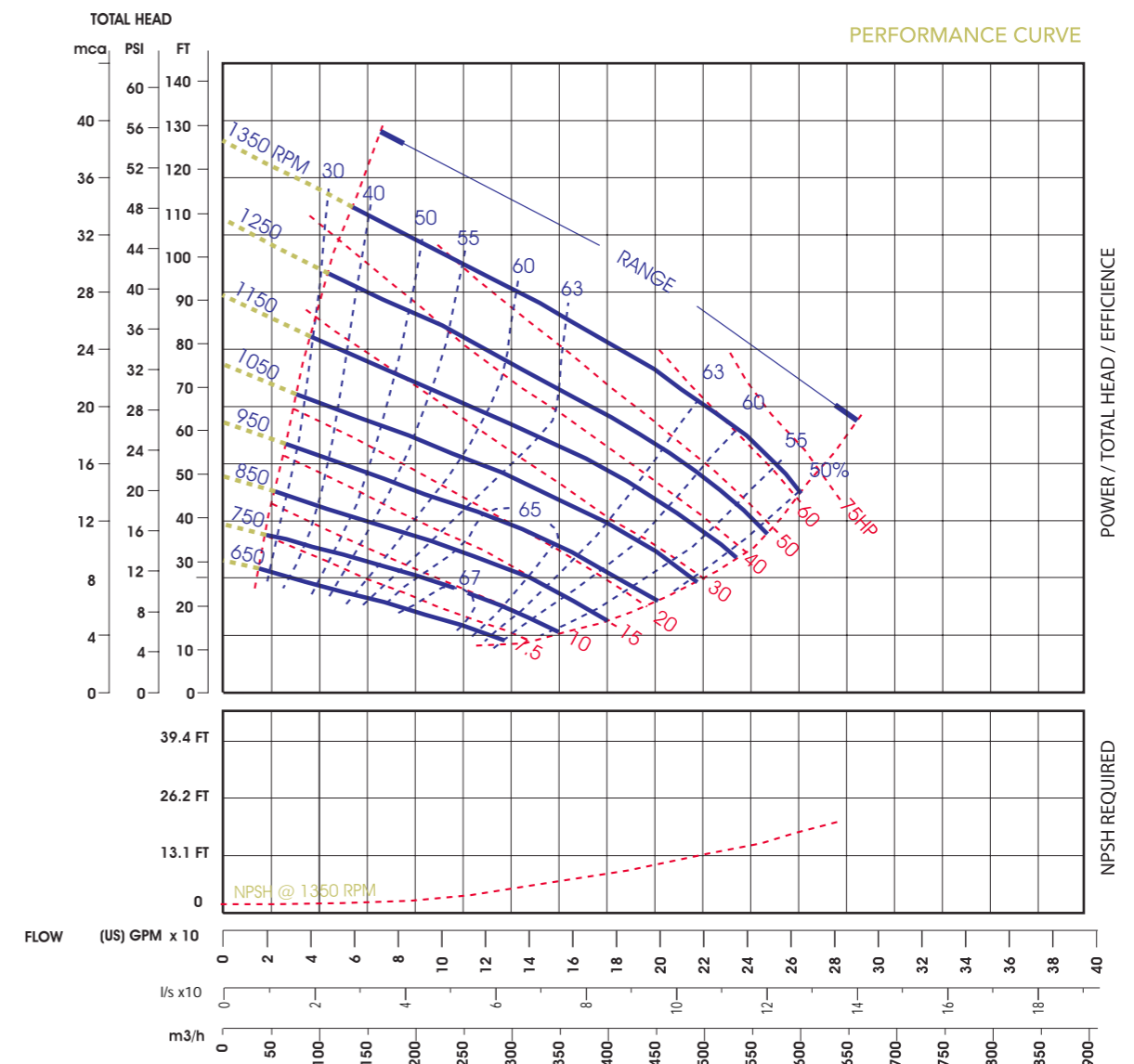
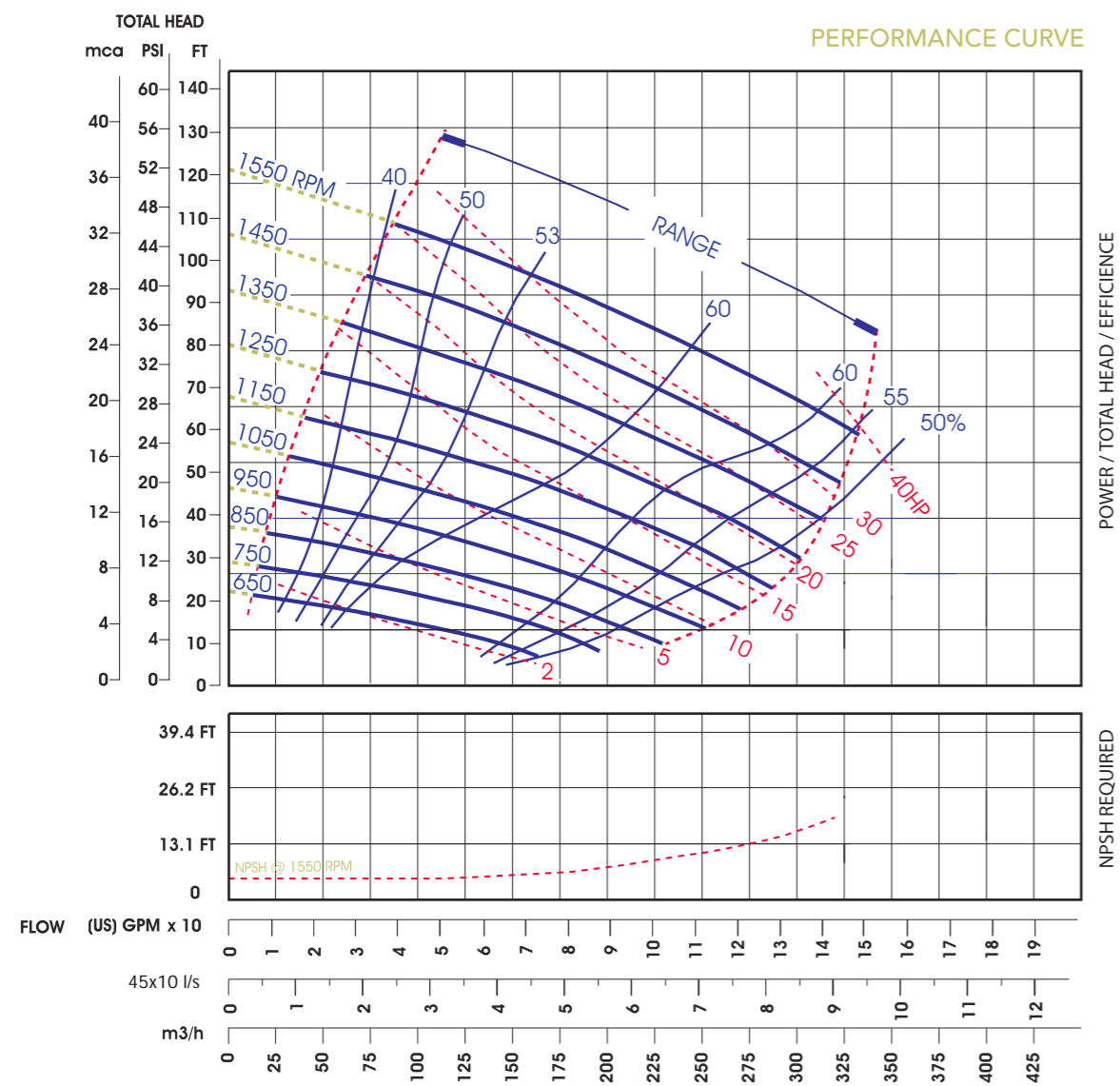


DATA SHEET

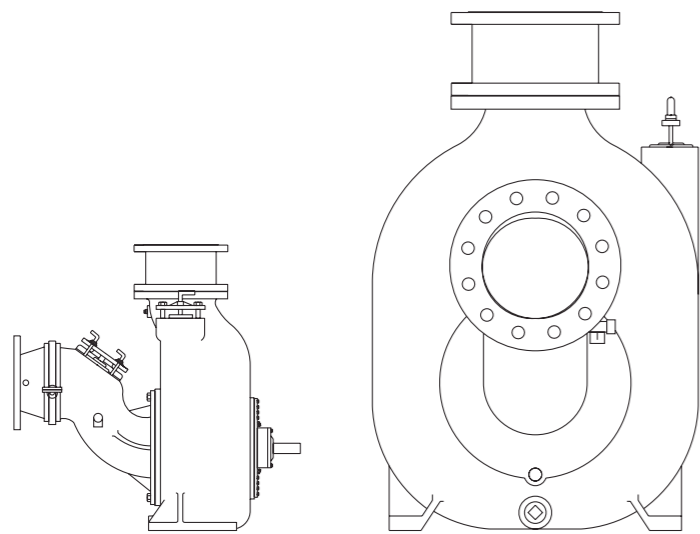
Net Weight: 588kg (1295lbs)
 Shipping Weights: 634kg (1399lbs)
 Impeller Diameter: 374,65 mm (14,3/4")
 RPM: from 650rpm to 1350rpm
 Max. Solids: 76,2mm (3")

SELF-PRIMING

650rpm 2,7m (9ft) - 750rpm 3,7m (12ft)
 850rpm 4,6m (15ft) - 950rpm 5,2m (17ft)
 1050rpm 6,1m (20ft) - 1150rpm 6,4m (21ft)
 1250rpm 6,7m (22ft) - 1350rpm 7,0m (23ft)
 before using the table, check the NPSH



MODEL S-10



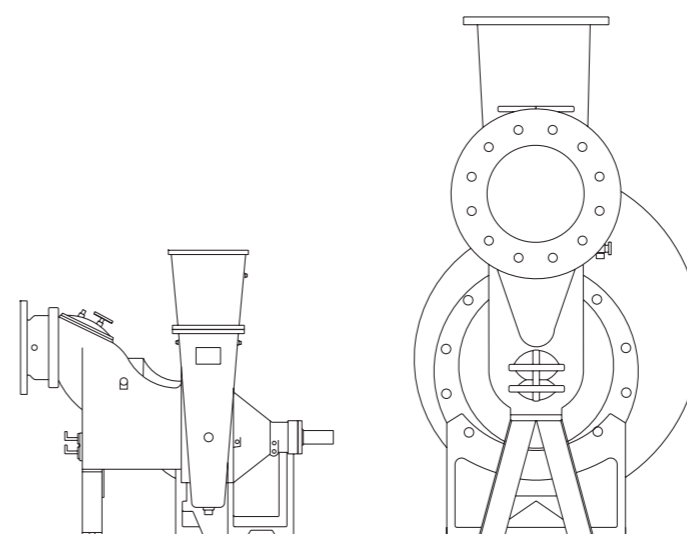
DATA SHEET

Net Weight: 635kg (1400lbs)
 Shipping Weights: 663kg (1461lbs)
 Impeller Diameter: 374,65 mm (14,3/4")
 RPM: from 650rpm to 1450rpm
 Max. Solids: 76,2mm (3")

SELF-PRIMING

650rpm 2,1m (7ft) - 750rpm 3,4m (11ft)
 850rpm 4,3m (14ft) - 950rpm 5,2m (17ft)
 1050rpm 5,5m (18ft) - 1150rpm 5,5m (18ft)
 1250rpm 5,8m (19ft) - 1350 6,7m (22ft)
 1450rpm 6,7m (22ft)
 before using the table, check the NPSH

MODEL S-12

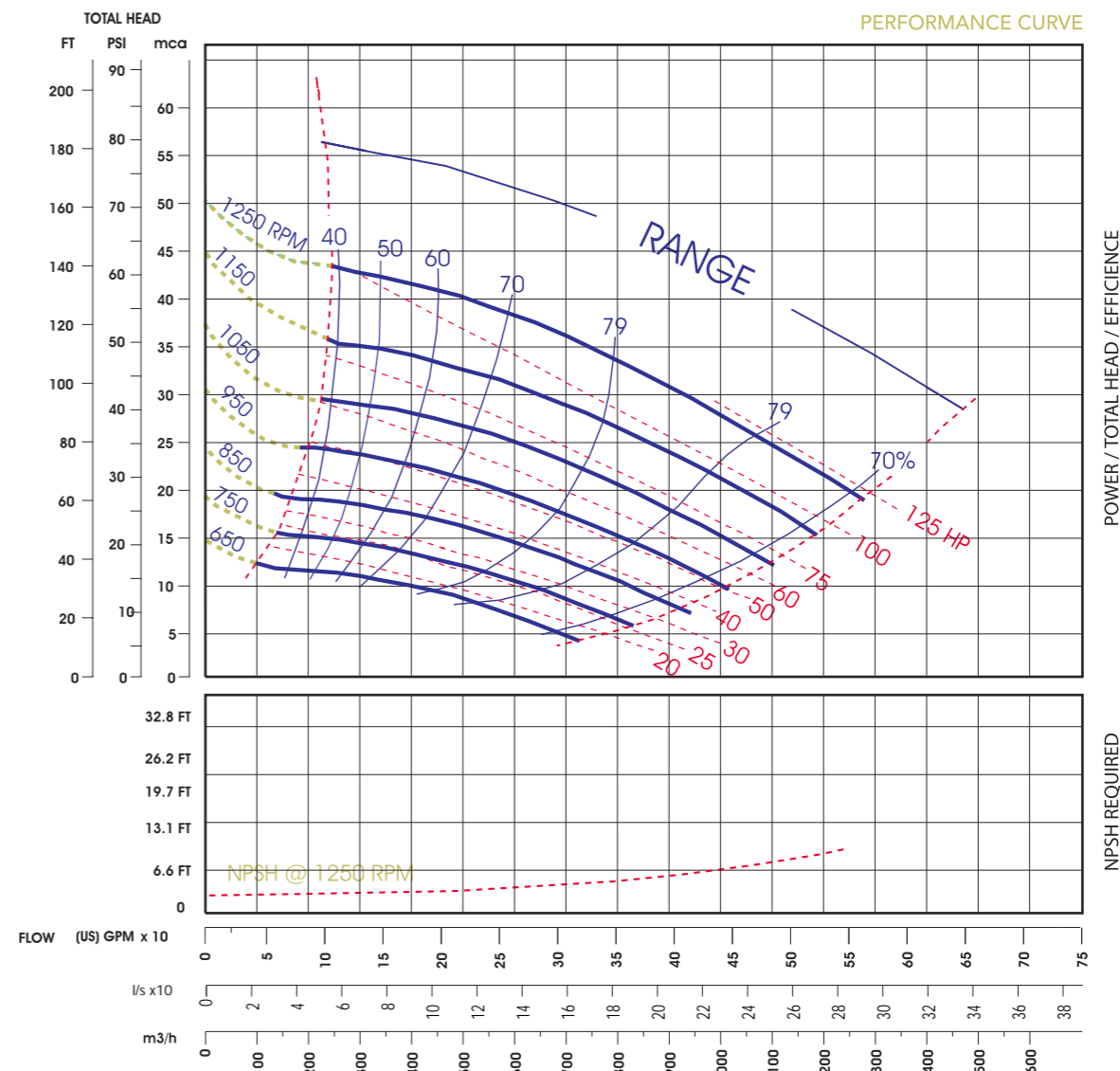
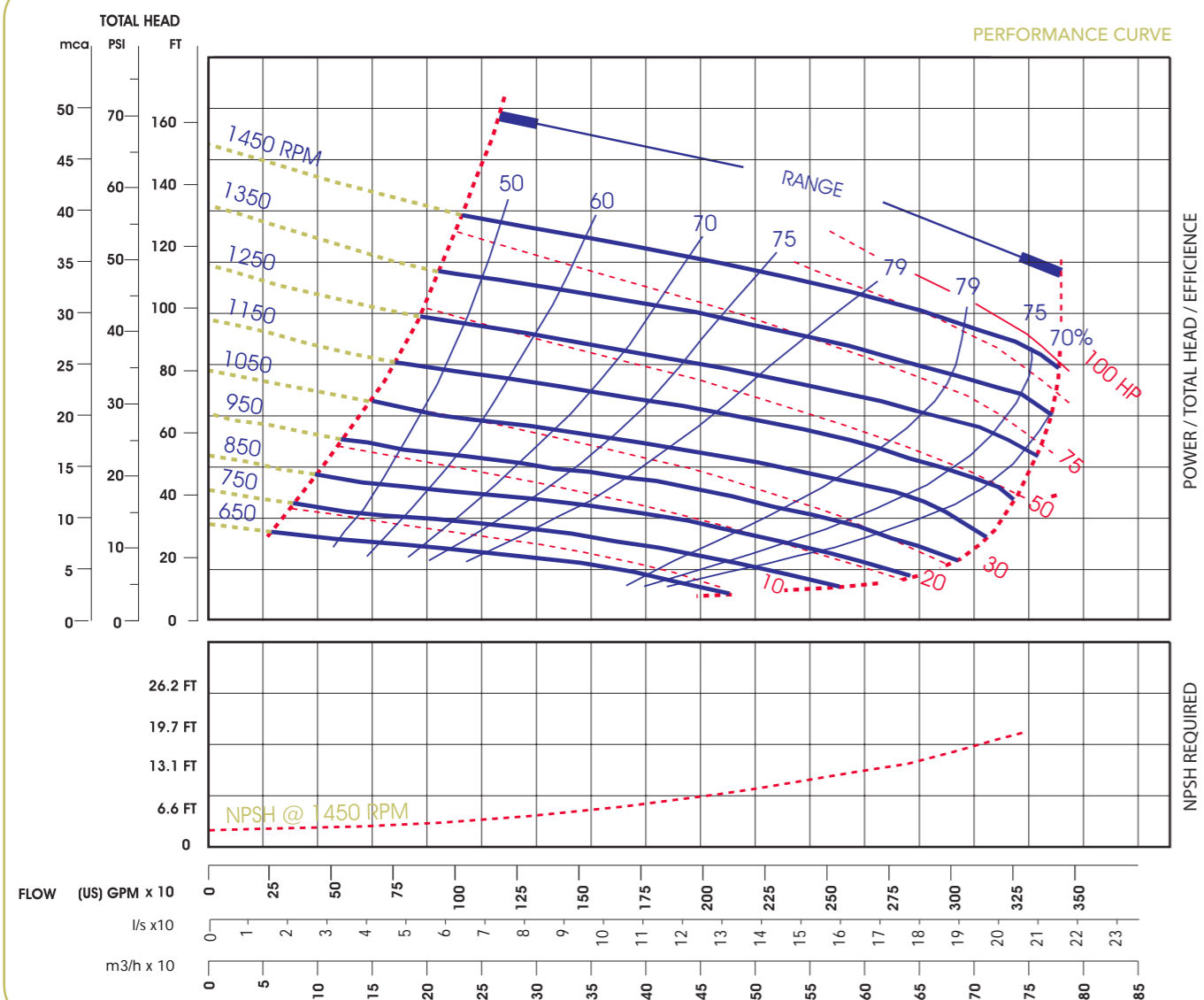


DATA SHEET

Net Weight: 998kg (2200lbs)
 Shipping Weights: 1066kg (2350lbs)
 Impeller Diameter: 457,2 mm (18")
 RPM: from 650rpm to 1250rpm
 Max. Solids: 76,2mm (3")

SELF-PRIMING

650rpm 1,5m (5ft) - 750rpm 2,4m (8ft)
 850rpm 3,7m (12ft) - 950rpm 4,3m (14ft)
 1050rpm 4,6m (15ft) - 1150rpm 4,6m (15ft)
 1250rpm 4,9m (16ft)
 before using the table, check the NPSH

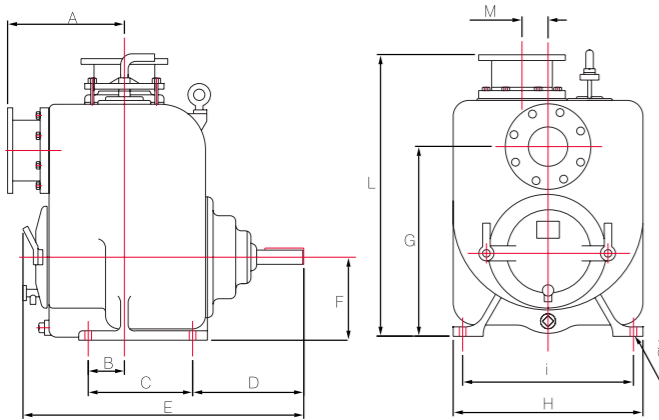


I-LINE

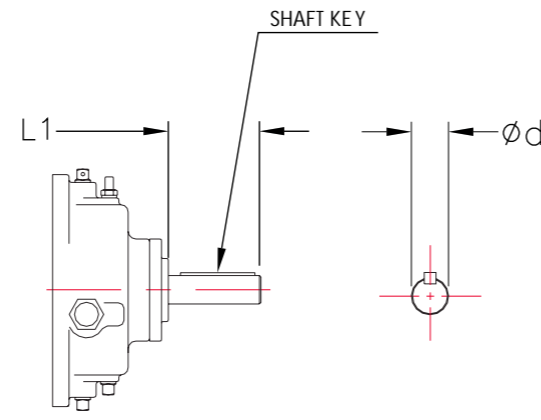
MODEL I-3

The principal characteristics of the I series are high efficiency, diverse construction materials, operate by different speeds, easy and quick maintenance and operation.

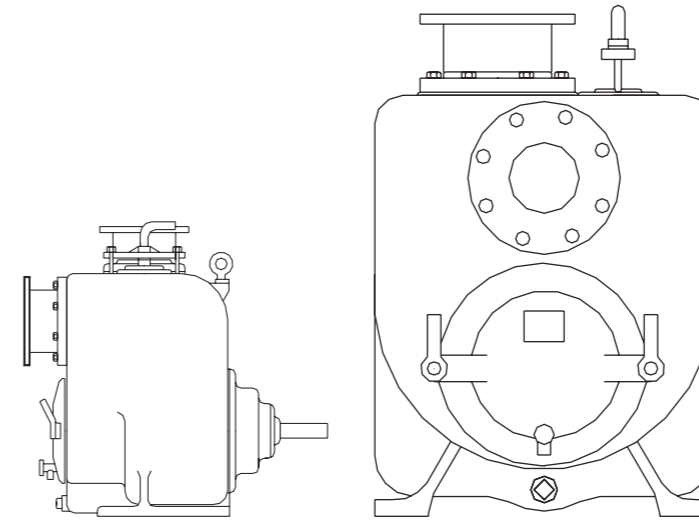
I LINE SIZE - MODELS I-3, I-4, I-6



IMPELLER SHAFT



MODELS	I-3"	I-3	I-4"	I-4	I-6"	I-6
A	11,50	292,1	12,50	317,5	16,00	406,4
B	3,00	76,2	3,81	96,8	3,06	77,7
C	9,00	228,6	11,00	279,4	11,00	279,4
D	11,14	282,9	11,71	297,5	13,02	330,7
E	26,25	666,8	29,59	751,6	33,25	844,6
F	7,50	190,5	8,75	222,2	10,13	257,0
G	17,00	431,8	20,00	508,0	22,38	568,4
H	17,00	431,8	20,00	508,0	23,00	584,2
I	15,50	394,0	18,00	457,2	20,75	527,2
J	0,69	17,5	0,69	17,5	0,69	17,5
K	1,50	38,1	1,50	38,1	1,75	44,5
L	27,04	686,8	29,68	749,3	35,32	897,1
M	2,75	69,8	2,75	69,8	2,75	69,8
Q	4,06	103,1	4,96	126,2	4,50	114,3

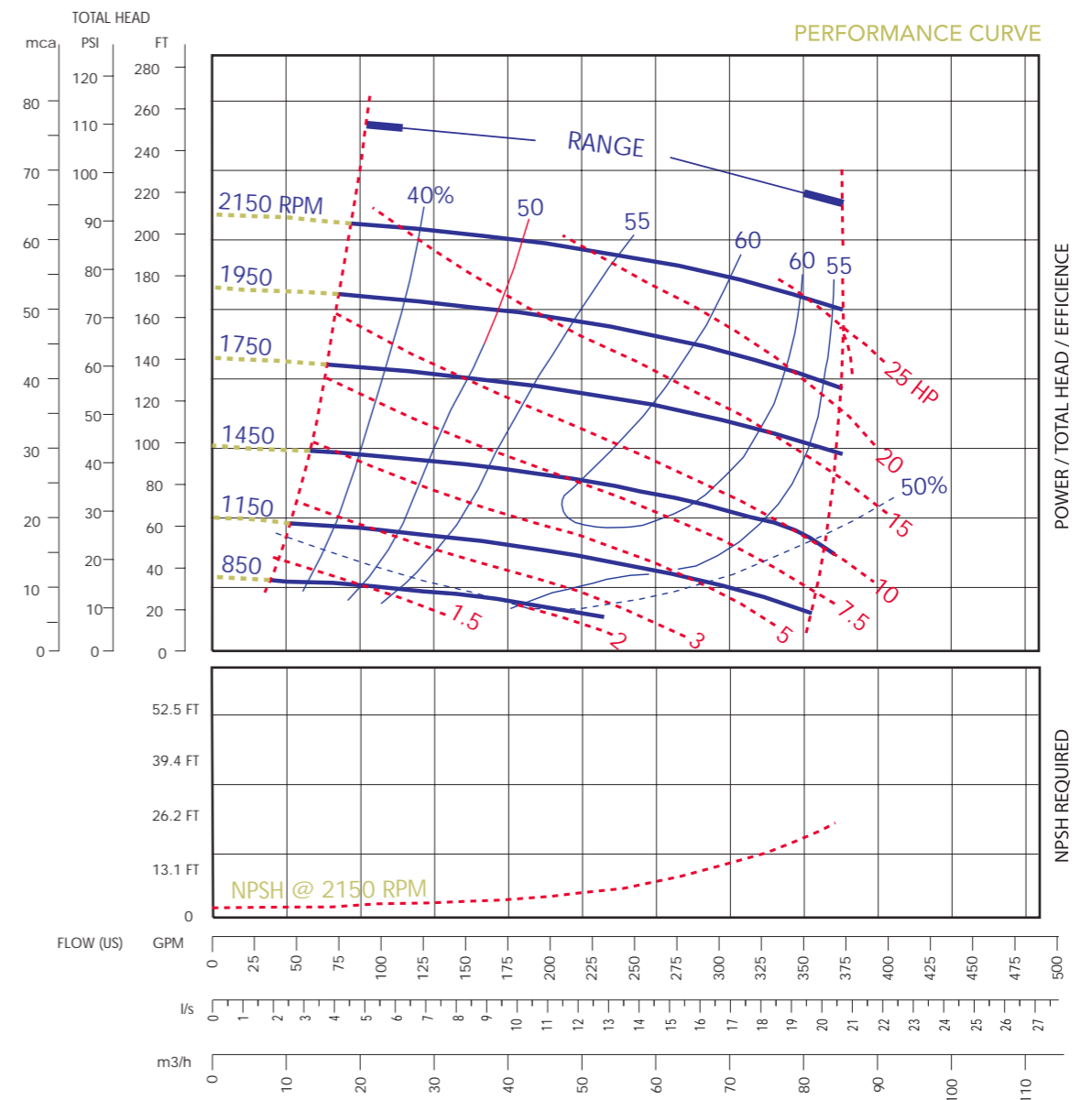


DATA SHEET

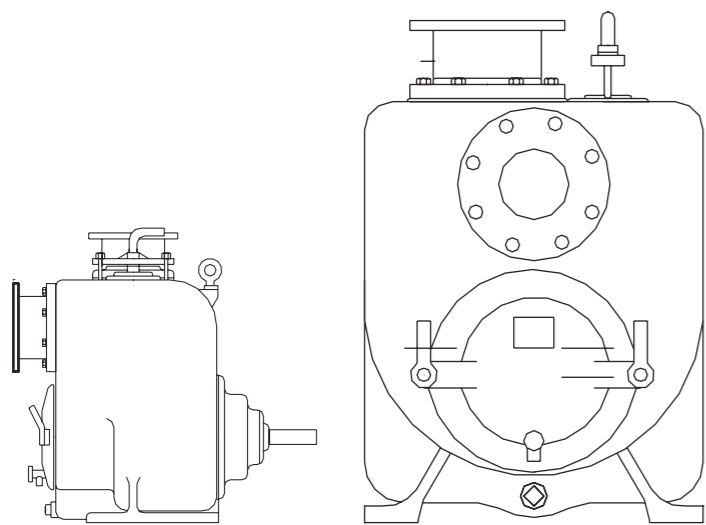
Net Weight: 214kg (472lbs)
 Shipping Weights: 225kg (497lbs)
 Impeller Diameter: 279,4 mm (11")
 RPM: from 850rpm to 2150rpm
 Max. Solids: 20,63mm (13/16")

SELF-PRIMING

850rpm 2,1m (7ft) - 1150rpm 2,7m (9ft)
 1450rpm 4,0m (13ft) - 1750rpm 7,0m (23ft)
 1950rpm 7,0m (23ft) - 2150rpm 7,0m (23ft)
 before using the table, check the NPSH



MODEL I-4



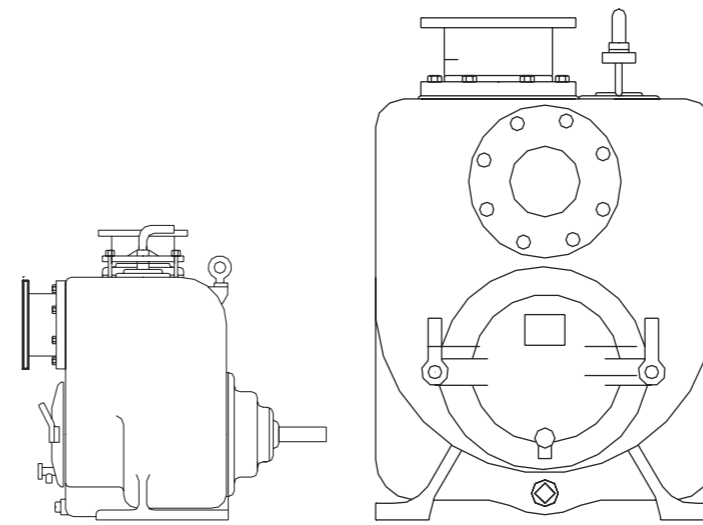
DATA SHEET

Net Weight: 291kg (640lbs)
 Shipping Weights: 311kg (686lbs)
 Impeller Diameter: 279,4 mm (11")
 RPM: from 850rpm to 2150rpm
 Max. Solids: 28,57 mm (1,1/8")

SELF-PRIMING

850rpm 2,4m (8ft) - 1150rpm 3,1m (10ft)
 1450rpm 3,7m (12ft) - 1750rpm 4,0m (13ft)
 1950rpm 4,6m (15ft) - 2150rpm 5,2m (17ft)
 before using the table, check the NPSH

MODEL I-6

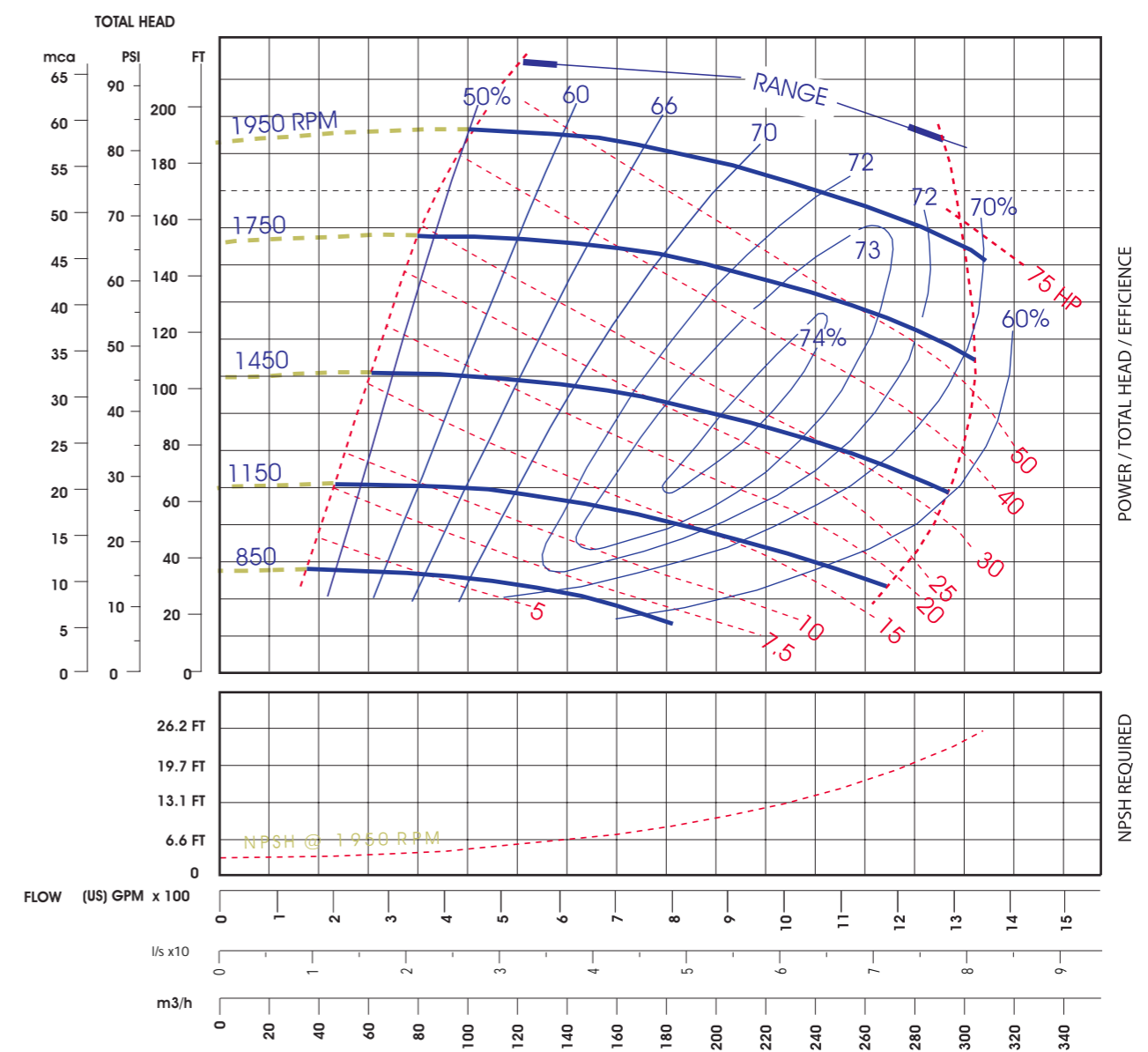
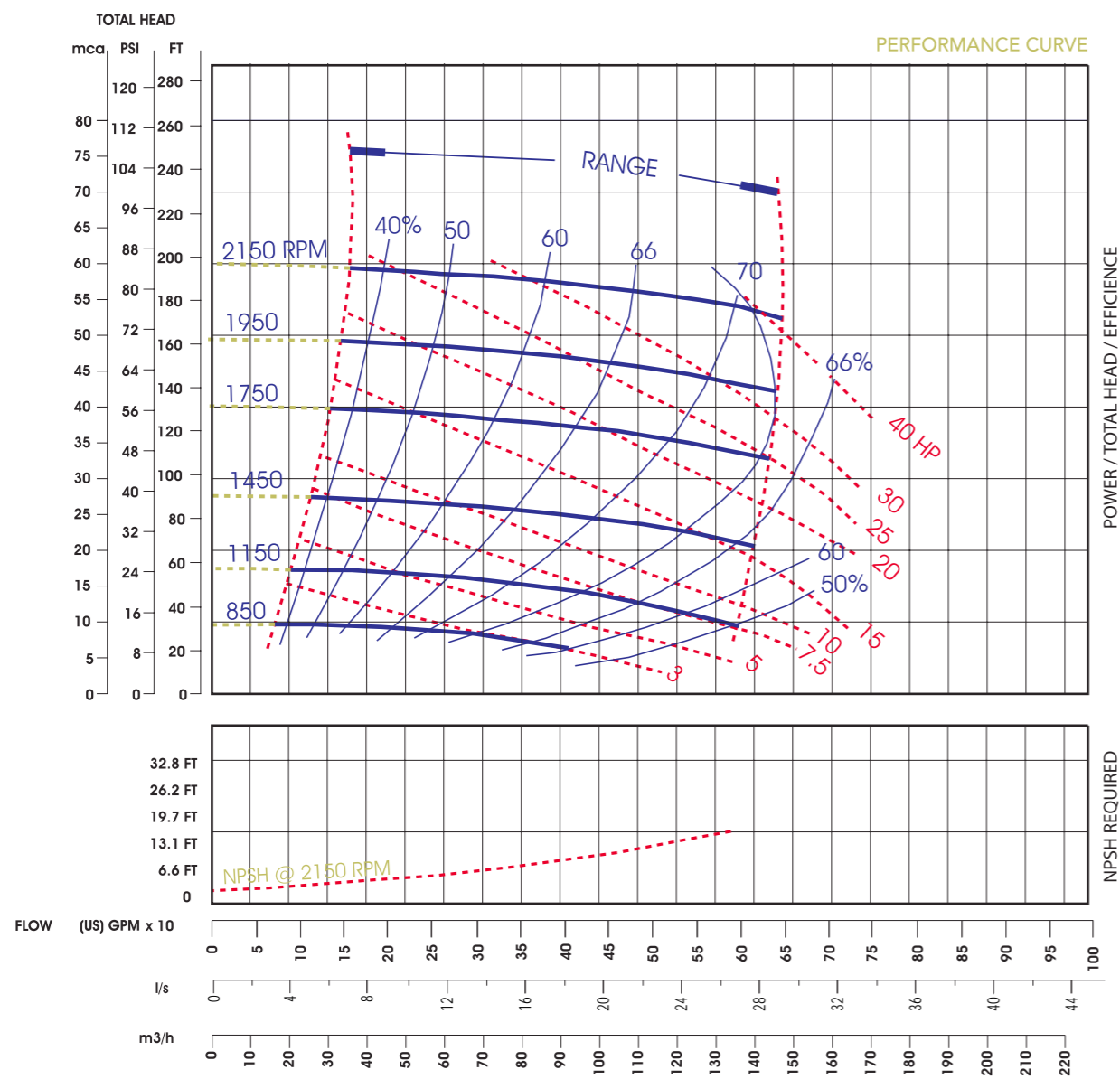


DATA SHEET

Net Weight: 413kg (910lbs)
 Shipping Weights: 437kg (965lbs)
 Impeller Diameter: 317,5 mm (12,1/2")
 RPM: from 850rpm to 1950rpm
 Max. Solids: 31,75mm (1,1/4")

SELF-PRIMING

850rpm 2,4m (8ft) - 1150rpm 3,1m (10ft)
 1450rpm 4,3m (14ft) - 1750rpm 4,6m (15ft)
 1950rpm 4,6m (15ft)
 before using the table, check the NPSH





ADVANTAGE OF SELF-PRIMERS

Logistics

- No confined space entry required
- Pump located outside the wet well for easier & cleaner access
- No heavy lifting equipment required for repairs
- Powered by standard NEMA motors

Maintenance

- Removable suction cover allows quick unclogging of pump
- Primary wear parts: seal, impeller & wear plate can be changed through removable suction cover
- Rotating assembly easily removed for shop repairs without disturbing piping

Design

- Rugged open impellers for solids handling to 3"
- Both speed & impeller trim can be employed to meet service conditions
- Impeller design keeps seal pressure low & reduces solids buildup in stuffing box
- Suction flapper check valve speeds self-priming and eliminates foot valves