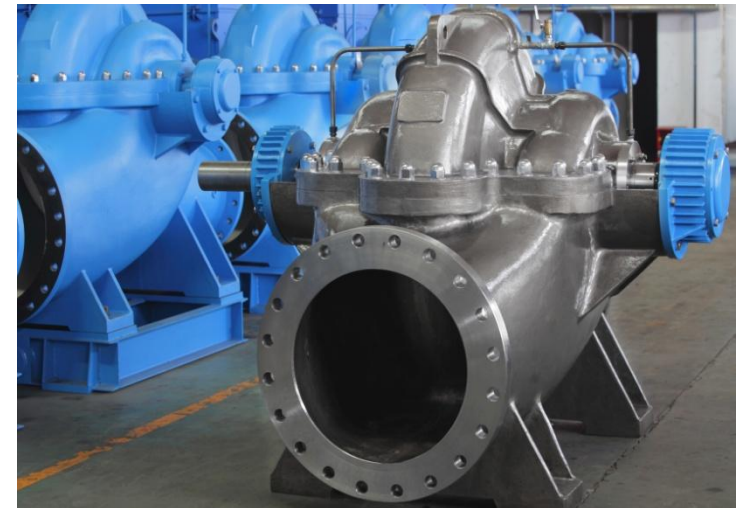


Roodhart BB1

The Roodhart BB1 series is the state-of-the art product in the horizontal axial split case pumps market. It meets or exceeds the requirements of intended market applications. The family of pumps capitalizes fully optimized casing hydraulic concept to minimize turbulence at the impeller eye, by its straight laminar approach, thus maximizing efficiency. This also results in the lowest profile and minimum floor space of any BB1 pump on the market today. The pump family has been designed for low installation cost, and ease of maintenance objectives.

Roodhart BB1	
Maximum Capacity	Up to 15000 m3/h
Maximum Head	Up to 250 m
Maximum temperature	Up to 180 °C
Material Design	<ul style="list-style-type: none">• Carbon steel and Cr-Ni cast steel• Duplex• Super Duplex• Cast and Ductile iron• All API Material class available• Special material available
Pump Size	On request



ROODHART GROUP

Pumps, seals, systems and maintenance